


Timothy Park is a new residential community of 114 duplex rental units. This duplex community offers enough privacy and living space to accommodate everyone. At first glance, you will notice a streetscape of several color schemes and residences designed to look like individual custom homes. In addition to all the amenities a home would have, including a gas fireplace and walk-in closets, each unit has an enclosed garage, one covered carport and one reserved stall available for up to three vehicles. Timothy Park, located within easy walking distance from Central Washington University, also has a proposed playground for kids and additional storage spaces on-site, making it the perfect community for small families, college students, young professionals or retired couples looking for a safe, relaxing place to live.



Timothy Park   
1000 East Harvest Loop #300  
Ellensburg, WA 98926



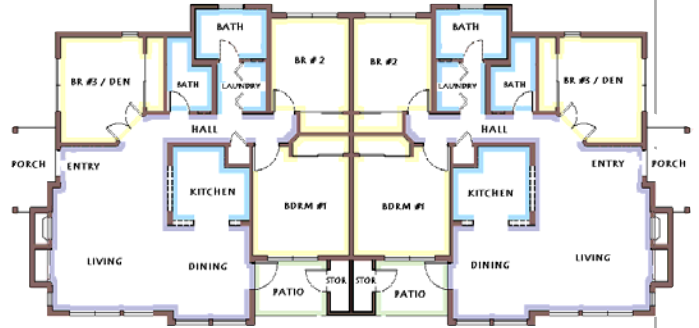
We have room for everybody!

Timothy Park 

A Residential Duplex Community in Ellensburg, WA.

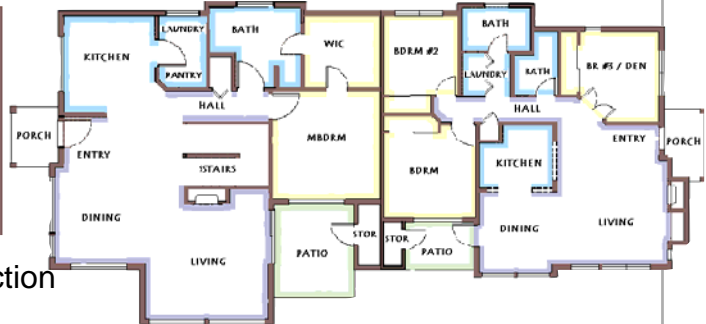
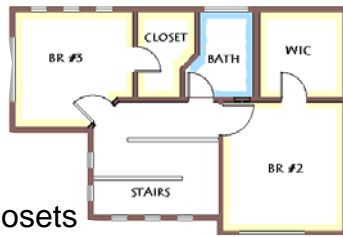


- 3 bedrooms + 2 bathrooms
- Separate living room and dining area
- Fully maintained landscaping
- Laundry rooms with full-size washer & dryer
- Open kitchen area with microwave oven
- Enclosed parking and covered carports
- Individual thermostats for living spaces
- Access to cable TV in each room
- Entertainment center
- Private patio
- Gas fireplace
- Cathedral ceilings
- Spacious walk-in closets
- CAT5 wiring installed for broadband connection
- Energy efficient gas water heaters
- Energy efficient windows



Single Story Floorplan: 1,022 Sq. Ft.

Townhome Floorplan: 1,340 Sq. Ft.



## New units available every month!

Timothy Park is located at 1000 East Harvest Loop, Ellensburg (at the north end of Alder Street). Please call 509-962-1300 or visit our website [www.timothypark.net](http://www.timothypark.net) for applications or more information.